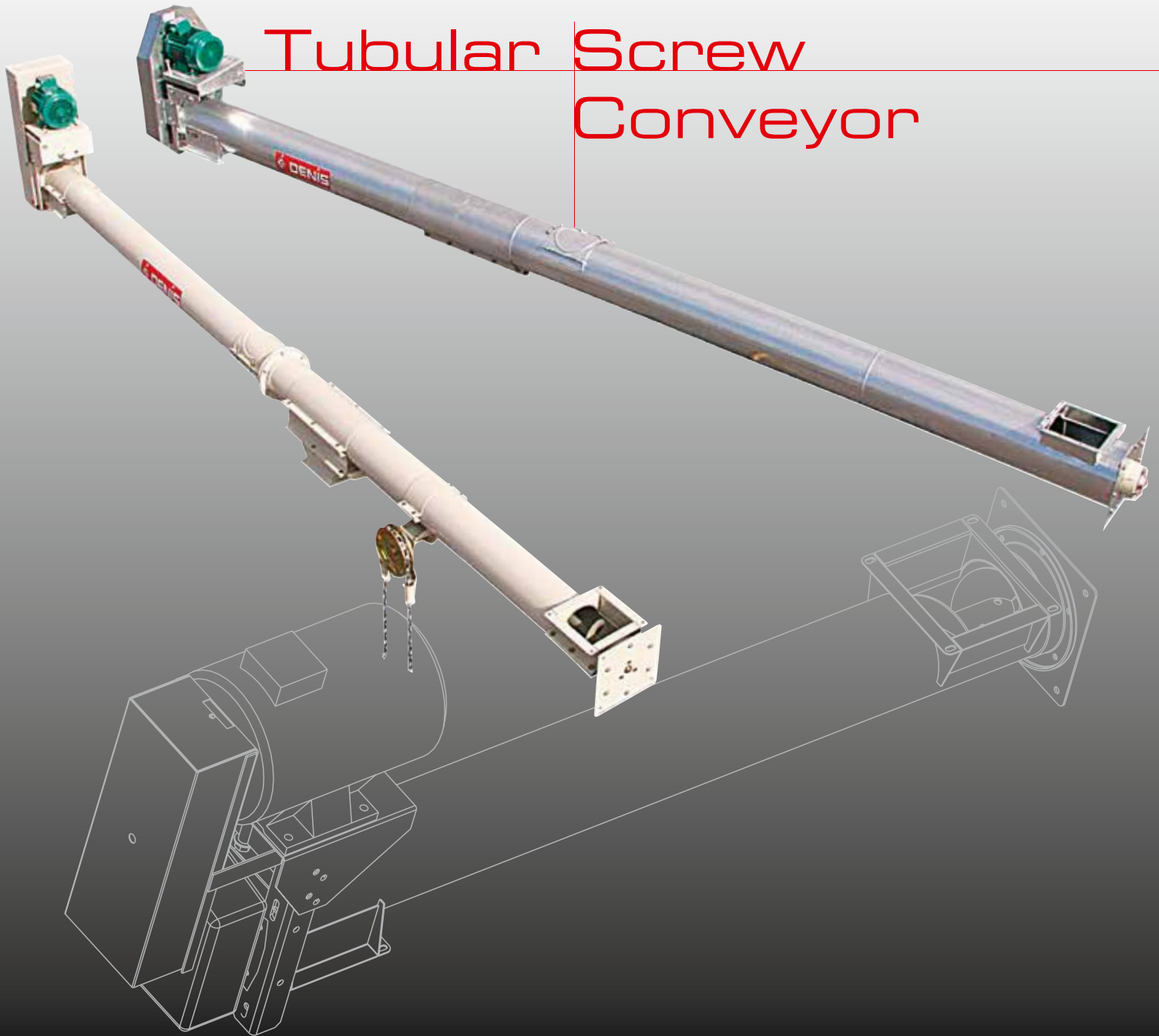



# Tubular Screw Conveyor



# General Description

The  **DENIS Tubular Screw Conveyors** provide efficient conveying – whether in the horizontal or at an angle – of cereals, granules and many other products. These screw conveyors are widely used for feeding and discharging installations, not only in agriculture but also for many industrial applications. They provide the following advantages:

**Performant and reliable:** joined either by sleeve or flanges, this ensures strength and sealing - Regular capacities - Horizontal or inclined working positions on important lengths - comfortable use and low maintenance.

**Functional and modular:** 0.25 m standard multiple lengths - inlets and outlets positioned as requested - Wide choice of drive units and bearings depending on products and installation configuration - Possibility to change and maintain the screw conveyor several years after commissioning thanks to our important stock of spare parts and available components.

**Robust and Secure:** Heavy duty construction - Screw flights entirely manufactured and straightened up in our workshop - All our Tubular Screw Conveyors have protections conforming to the "machinery" Directive.

**Meticulous preparation and manufacture provide quality:** the standard paint finish starts with degreasing, then phosphate primer, before the final coats which are baked at 180°C and applied to each individual part.

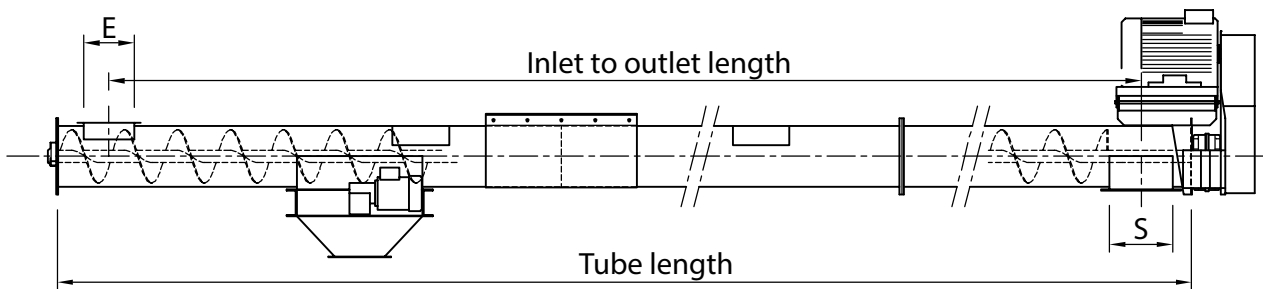
Options: White "non-toxic" paint, hot dip galvanized elements, stainless steel...

**ATEX:** This equipment conforms to the European ATEX standards.

## Performance

Type	VH 160			VH 200			VH 240			VH 300		VH 400			
Conveyor working position	horizontal			45° Incl.	horizontal		45° Incl.	horizontal			45° Incl.	horizontal	45° Incl.		
Capacities in TPH (*)	15	20	30	20	30	40	35	30	40	60	50	100		200	
Speed in RPM	265	414	520	520	230	435	435	230	230	414	414	180	325	230	325

\*Based on wheat SW 0.75 - Humidity 16%



## Standard dimensions

Type	VH 160	VH 200	VH 240	VH 300	VH 400
Tube diameter	Ø 160 mm	Ø 200 mm	Ø 240 mm	Ø 300 mm	Ø 406 mm
Flight diameter	Ø 130 mm	Ø 170 mm	Ø 210 mm	Ø 270 mm	Ø 373 mm
Pitch	130 mm	170 mm	210 mm	270 mm	373 mm
Maximum distance between bearings	2,50 m	3 m	3 m	3 m	6 m

**A wide range of tubular screw conveyors, standard or specifically tailored, to convey all kind of bulk products at important capacities with different densities and particle size: cereals, fragile products, granules and powders, flour, minerals, etc. and similar products used in a diverse range of industries.**

# Characteristics

## A Flight

Straightened, welded on the tube of the support flight

### Options :

- Reduced pitch
- Left pitch flight
- Continuously welded on one or both sides
- Flight without bearings
- Hot dip galvanized finish
- White "non-toxic" paint
- Greater diameters and thicker flights
- Extremity ejector

## B Tail End

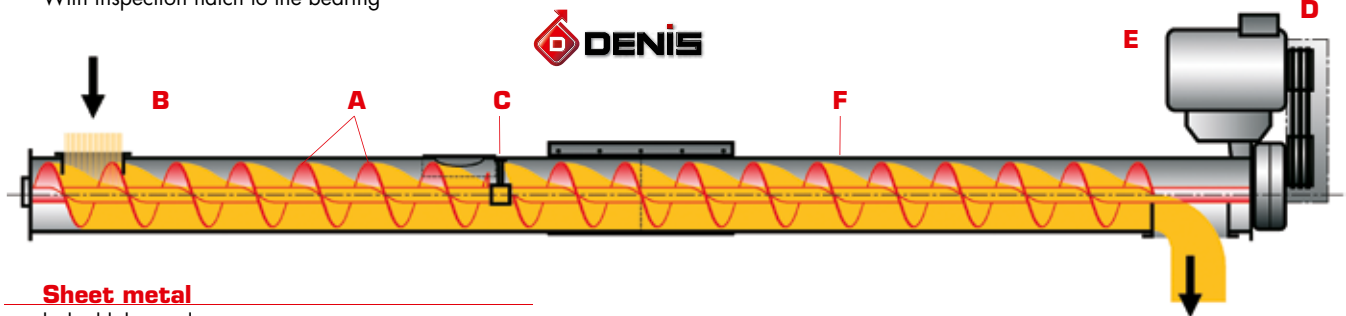
With bearings (sealed bearing as standard on inclined conveyors)

### Option :

- Adaptation of sealed bearings (for horizontal working position) or special bearings.

## C Intermediate Bearings

With inspection hatch to the bearing



## Sheet metal

baked lake steel

### Options :

- Galvanised finish
- White "non-toxic" paint
- Stainless steel 304L, 316L

## Intermediate Outlets (for horizontal usage):

With control slides

- Electric
- Electro-pneumatic
- Manual - by handwheel  
- by rack and pinion with chain

## D Head drive unit

With bearings (for screw conveyors supplied with gearbox or geared motor)

### Option :

- Adaptation of sealed or specific bearings

## E Drive Unit

By motor and hollow shaft gearbox (depending on RPM). Pullies and belt transmission (by geared motor with pinion and chain transmission for screw conveyor VH400).

### Options :

- Adapted speed
- Specific drive unit to suit requirements
- Geared motor with hollow shaft (parallel shaft)
- Helical geared motor with coupling sleeves under protective guard
- Drive units foreseen to work with frequency diverter

## F Tube

continuously welded. Joined by flanges (VH160) or by sleeves for the other conveyors

### Options :

- Alternative tube thicknesses
- Sealed flange joints
- Clean out slides (drop-bottoms)

CE All our equipment and instrumentations meet with the standards for safety

Ex This equipment conforms to the European ATEX standards

# Accessories

- Connections, pipes, mobiles
- Safety: rotation detector, anti-jamming device, with microswitch, temperature sensors

# Facilities

Numerous options fitting for diverse activities

## Agro-cereal sector

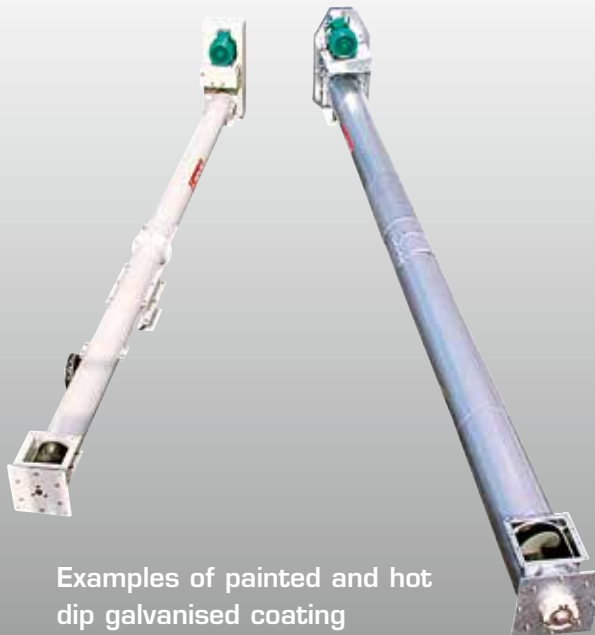
- Agriculture
- Commercial grain
- Feedstuff industry
- Milling

## Industrial sector

- Minerals
- Fertilizer
- Wood pellets



Drive unit with motor, pulleys and belts



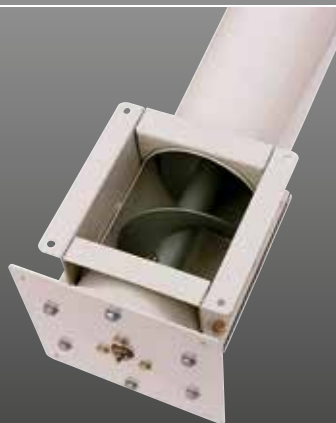
Examples of painted and hot dip galvanised coating



Drive unit with motor, hollow shaft gearbox, pulleys and belts



Intermediate outlet with longitudinal slide, rack and pinion operated with chain



Tail end with inlet



Intermediate bearing at each junction with inspection hatch and grease nipple



Avenue Louis-Denis - 28160 Brou - France  
 Tél. +33 (0)2 37 97 66 11 • Fax +33 (0)2 37 97 66 40  
 www.denis.fr



*These characteristics related to this documentation are given as an indication only and can be modified at any time without notice to improve the product. This manufacturer cannot in any way be held responsible for these changes.*