

Screw Elevators



General description

Screw Elevators  **DENIS**, with their advanced design, offer the following advantages:

Efficient and reliable: sleeve joints (with 400 mm diameter collars) ensure rigidity and sealing – Silent, vibration-free operation guarantees quietly and low maintenance.

Functional and modular: standard adjustable extension element connected with sleeve.

Solid and safe: solid construction – screw shafts are entirely manufactured and aligned in our own factory – head, tail and intermediate bearings (except the 100 series) – all screw elevators are fitted with caged inlet in tail and protection in conformance with the Machinery Directive.

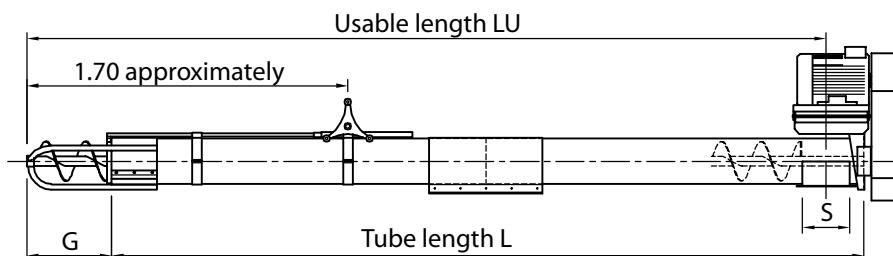
DENIS paintwork quality: every part undergoes following processes, before pre-assembly: sand blasting in degreaser tunnel, phosphate coated anti-corrosion treatment, primer protection and 180°C cured final paint finish. These processes are applied on a continuous production line. The final result provides each component optimum corrosion resistance, over 400 hours in salt spray test, vs. 250 hours for pre-galvanized Z350. DENIS makes every effort to be environmentally friendly, controlling all emissions and component during this process.

ATEX : the equipment can be used in **Explosive Atmospheres** and **Conforms** with **European Standards**.

Performance

Type	VE 100	VE 125	VE 160	VE 200		VE 240	VE 300	VE 400
Maximum output in tons per hour at 45° (*)	7	14	25	35	45	50 - 65	100	250
Rotation speed (rpm)	725	900	580	435	543	414	325	325
Length L (m)	3 to 8	3 to 10	3 to 13	3 to 13		3 to 15	3 to 12	3 to 12
Maximum power (kW)	1.5	3	5.5	9		15	15	37

(*) Using wheat (SW 0.75 Humidity 16 %)



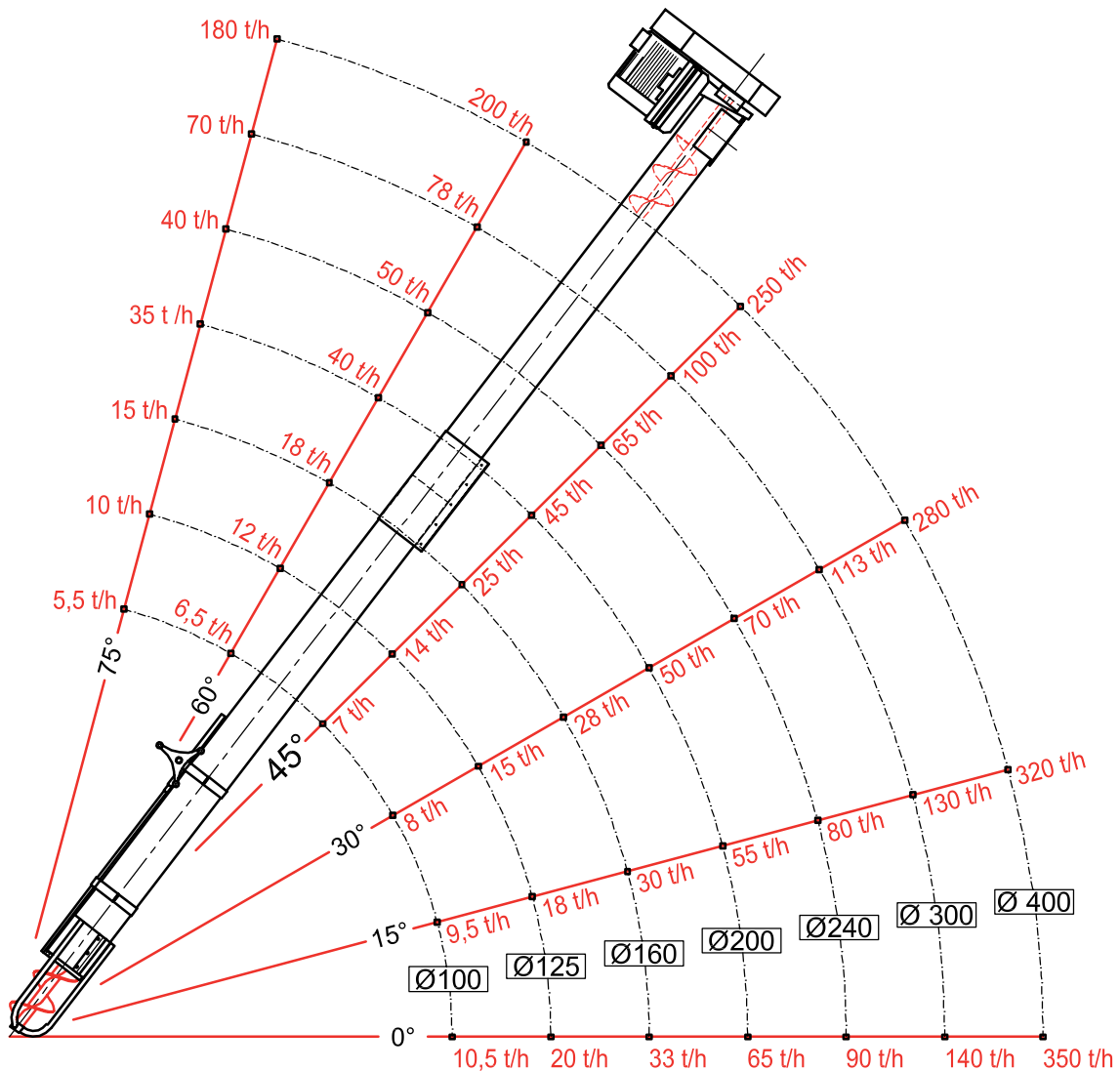
Standard dimensions

Type	VE 100	VE 125	VE 160	VE 200	VE 240	VE 300	VE 400
External tube diameters (mm)	Ø 100	Ø 125	Ø 160	Ø 200	Ø 240	Ø 300	Ø 400
Tube length L (m)	3 to 8	3 to 10	3 to 13	3 to 13	3 to 15	3 to 12	3 to 12
Caged inlet length G (mm)	385	570	340	440	450	630	800
Caged inlet external diameter	Ø 180 mm	Ø 195 mm	Ø 240 mm	Ø 260 mm	Ø 305 mm	Ø 390 mm	Ø 550 mm
Usable length LU (m)	3.31 to 8.31	3.50 to 10.50	3.07 to 13.07	3.26 to 13.23	3.24 to 15.20	3.26 to 12.23	3.48 to 12.48
Exit aperture S (mm)	120 x 100	120 x 100	200 x 160	□ 200	□ 250	□ 250	500 x 400
Overall length (m)	3.46 to 8.46	3.65 to 10.65	3.34 to 13.34	3.60 to 13.57	3.61 to 15.57	3.82 to 12.79	4.41 to 13.41
Weight inclusive of motor (kg)	43.5 to 74	53.5 to 122	86 to 277	105 to 350	156 to 518	289 to 682	613 to 1878

Mobile screw elevator: refer to "folding" screw elevator data sheets Ø160 and 219

A wide range of standard screw elevators developed to handle loads at different inclinations, for all kinds of bulk products, of different densities and particle sizes: mainly cereals, but also pellets, fertilisers, minerals, etc... and designed to be easily adaptable to meet your every need.

Characteristics



(Output indication using wheat (SW 0.75 Humidity 16 %))

CE All our equipment meets current safety standard



The equipment can be used in **Explosive Atmospheres** and **Conforms** with **European** Standards.

Accessories

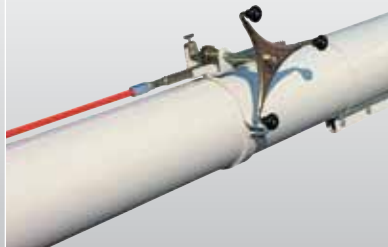
- Hopper with safety mesh
- Square and round connections
- Connections, Pipes, Mobiles,
- Safety features: anti-choke control device with micro switch, temperature sensors

Options

- Reinforced seal bearings (above 160 mm diameter)
- Greater thickness tube
- Coated flight
- Reduced pitch flight
- Heavy duty flight
- Reinforced flight shaft
- Flight with non toxic painting
- Galvanised tube and/or flight
- Customised motors matched to operating environment



Base with regulating valve and guard grille

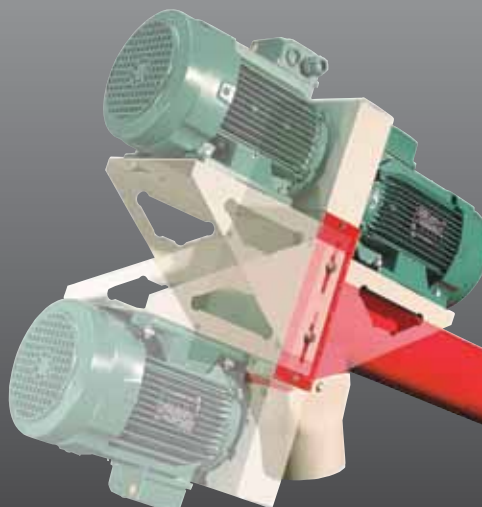
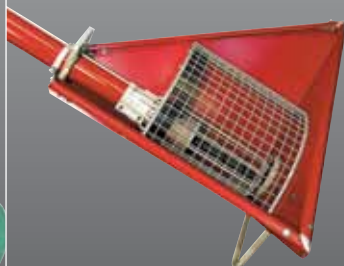


Rack and pinion controlled valve



Removable head

2 qx hopper



3 alternative motor mounting configurations (VE 100, VE 125)



Motor controller, pulleys and belts



Avenue Louis-Denis - 28160 Brou - France
Tél. +33 (0)2 37 97 66 11 • Fax +33 (0)2 37 97 66 40
www.denis.fr



These characteristics related to this documentation are given as an indication only and can be modified at any time without notice to improve the product. This manufacturer cannot in any way be held responsible for these changes.